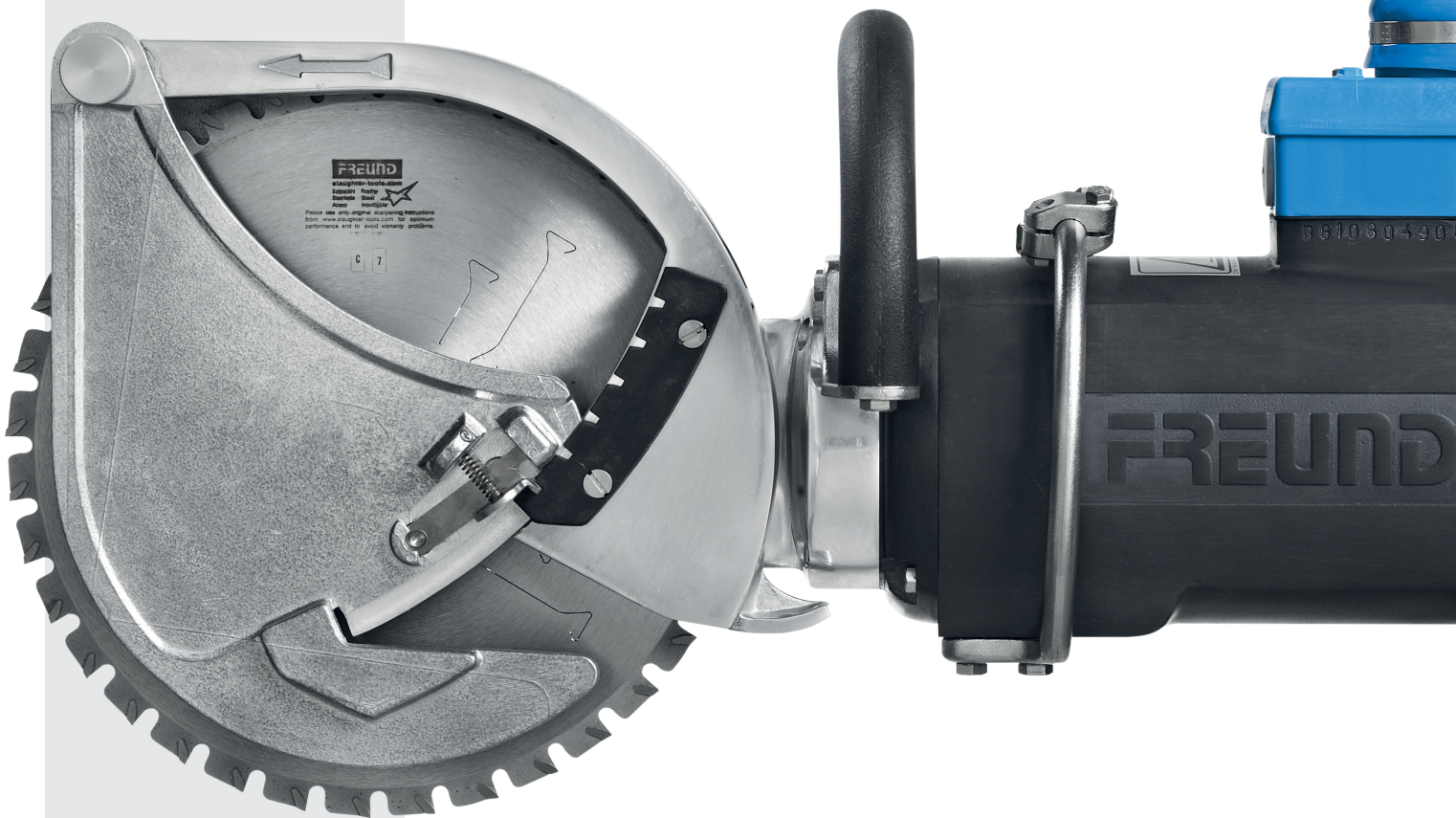


PRIMAL CUTTING

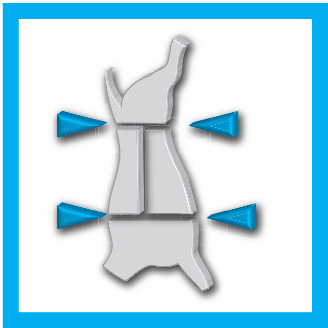


TRADITION + INNOVATION = FUTURE





PRIMAL CUTTING



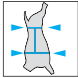
FREUND circular breaking and quartering saws offer state-of-the-art technology of the highest quality.

Tailored to each application, the individual products provide the right configuration for every kind of processing.

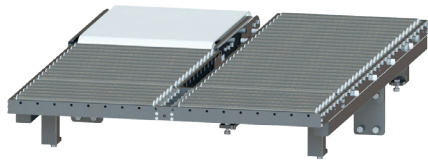
Safety and flexibility when handling saws is just as much at the core of this product group as high-quality processing.

The FREUND service department supports the user by offering expert advice in all technical matters relating to the individual machines.

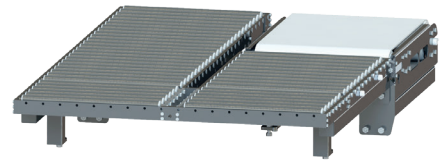
CONTENTS

	Cutting	4-14
	▶ ZKM	4 - 9
	▶ Universal Portal frame	8
	▶ Cutting table	9
	▶ Circular foot saw	9
	▶ Circular saws	10 - 13
	▶ Sparer-Ribs-Cutter	15
Spring balancers	16	

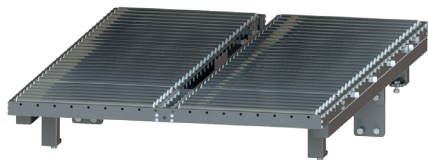
CIRCULAR CUTTING KNIFE AS A MODULAR TABLE VERSION



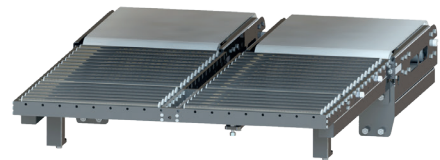
4.4



4.3



4.1



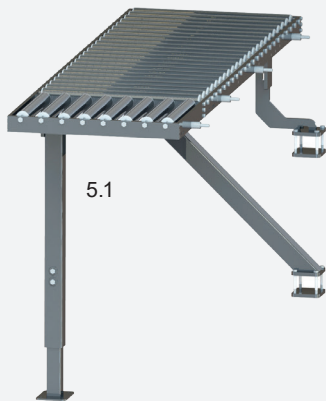
4.2



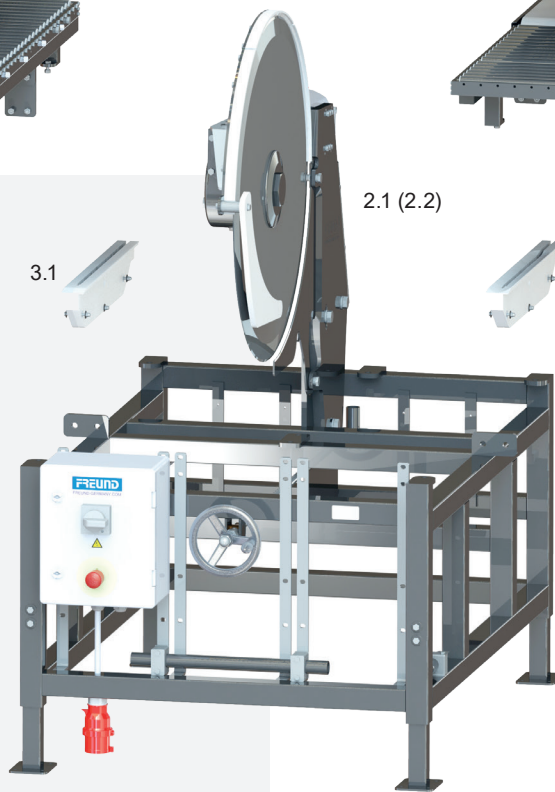
3.1



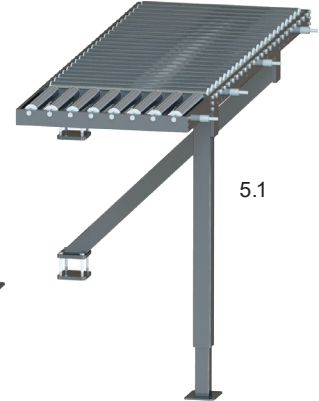
3.2



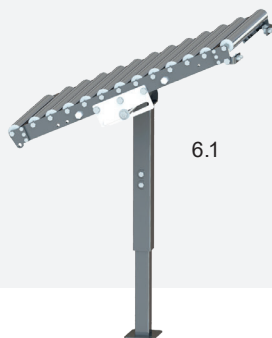
5.1



2.1 (2.2)



5.1



6.1



6.1

TECHNICAL DATA

	ZKM75-T
Weight (kg)	300
Diameter (mm)	750
Cutting depth (mm)	300
Protection class	IP 65
Drive type	electric, 3-phase
Power	2300 Watt (50Hz)



Pos.	Designation
1	ZKM75-08-T basic model
2.1	KM750S-1F circular knife for pigs
2.2	KM750S-2F circular knife for sheep
3.1	Guide insert for pigs
3.2	Guide insert for sheep
4.1	ZKM-T roller conveyors (left/right)
4.2	ZKM-T roller conveyors with conveyor belts (left/right)
4.3	ZKM-T roller conveyor with conveyor belt (right)
4.4	ZKM-T roller conveyor with conveyor belt (left)
5.1	Roller table attachment RTA
6.1	Buffer roller conveyor RTA

ZKM75-T

Circular cutting knife for low-loss coarse cutting of horizontal carcasses, e.g. on a cutting belt conveyor

- Compact unit for pre-head positioning in advance of a pig/sheep cutting line
- Loss-free, cleaner and hygienic cut without any smearing
- One operator can coarse cut up to 160 pig halves (3 cuts) per hour
- Design: Table with modular, exchangeable roller frame
- Stainless steel circular knife blade **INOX / rust-free**
- GS-certified: EC type examination as per German Product Safety Act

CIRCULAR CUTTING KNIFES



ZKM75-DA

Circular cutting knife for low-loss coarse cutting of horizontal carcasses, e.g. on a cutting belt conveyor

- Manual or electromotive lifting of the blade up to 200 mm above the cutting belt
- Space-saving suspension of ceiling or frame structure (suspended installation) in cutting equipment



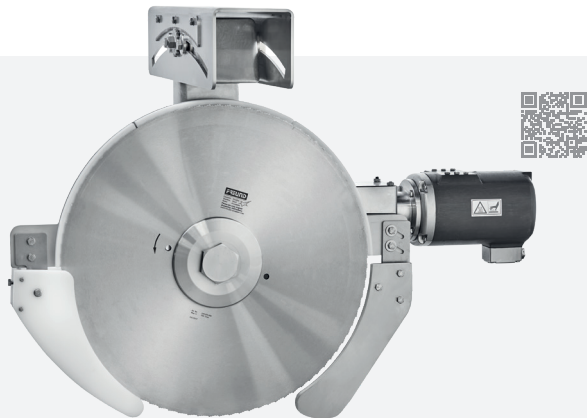
ZKM75-DA-JHS

Circular cutting knife for low-loss coarse cutting of horizontal carcasses, e.g. on a cutting belt conveyor

- Manual or electromotive lifting of the blade up to 200 mm above the cutting belt
- Space-saving suspension of ceiling or frame structure (suspended installation) in cutting equipment
- With lateral movement option

TECHNICAL DATA

	ZKM75-DA	ZKM75-DA-JHS	ZKM60-DA-MS	ZKM95-DA
Weight (kg)	11,5	19,5	20	3,1
Diameter (mm)	750	750	600	950
Cutting depth (mm)	300	100	120	15-51
Protection class	IP 65	IP 65	IP 65	
Rotation speed (min) [Power]				
-Motor 08	190 [2300 Watt (50Hz)]	190 [2300 Watt (50Hz)]	190 [2300 Watt (50Hz)]	-
-Motor 08	190 [3000 Watt (50Hz)]	190 [3000 Watt (50Hz)]	190 [3000 Watt (50Hz)]	-
-Motor 46B	94 [3000 Watt (50Hz)]	94 [3000 Watt (50Hz)]	-	94 [3000 Watt (50Hz)]



ZKM60-DA-MS

Circular knife blade for optimum separation of pig mid-sections in belly & cutlet series

- Space-saving suspension of ceiling or frame structure (suspended installation) in cutting equipment
- Continuous cutting angle adjustment $\pm 15^\circ$ can be set for optimum yield

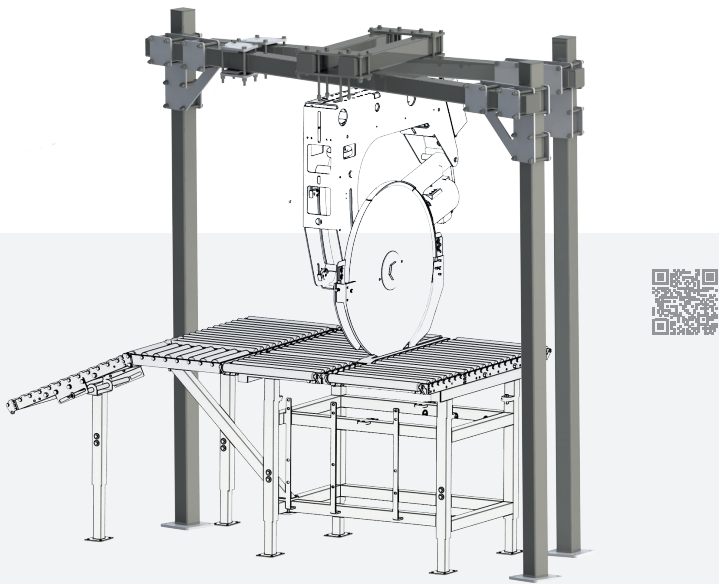


ZKM95-DA

Circular cutting knife for low-loss coarse cutting of horizontal carcasses, e.g. on a cutting belt conveyor

- Space-saving suspension of ceiling or frame structure (suspended installation) in cutting equipment
- Motor in stainless steel housing with fan cooling
- Large saw blade with a diameter of 950 mm
- Cutting depth of the circular knife blade is 340 mm
- Powerful motor 46B

UNIVERSAL FRAME DESIGN



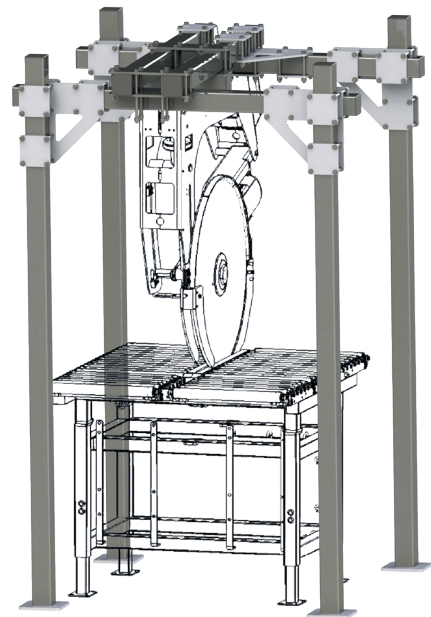
UNI-PORTAL UP3

Universally combinable frame design

- for ZKM circular breaking knife and other machines
- Diverse configuration options thanks to the modular design
- Straightforward adjustment of dimensions on-site

For easy set-up or integration of circular knife blades in cutting lines for example:

- ZKM75-DA
- ZKM60-DA-MS



UNI-PORTAL UP4

Universally combinable frame design

- for ZKM circular breaking knife and other machines
- Diverse configuration options thanks to the modular design
- Straightforward adjustment of dimensions on-site

For easy set-up or integration of circular knife blades in cutting lines for example:

- ZKM75-DA
- ZKM60-DA-MS



ZKM-T-2CB

Space-saving cutting table with automatic discharge conveyor, suitable for use with ZKM60-DA-MS

- Space-saving 1x1 design principle (1000x1000 mm work surface)
- Effortless cleaning thanks to table modules at the side that can be folded up/down
- Optimised installation options thanks to easily accessible drum motors and optimised chain link belts, thereby significantly reducing installation time
- Enhanced flushing of the chain link belts
- Automatic outward conveyance of the product
- Significant reduction in bone fragments thanks to stable body
- Tailored to ceiling-suspended ZKM-DA-MS and portal solutions

TECHNICAL DATA

	FK40-08
Weight (kg)	58
Diameter (mm)	400
Cutting depth (mm)	125
Protection class	IP 65
Saw blade rotations (min)	1170
Cutting speed (min)	1470
Drive type	electric, 3-phase
Power	2300 Watt (50Hz)/VA



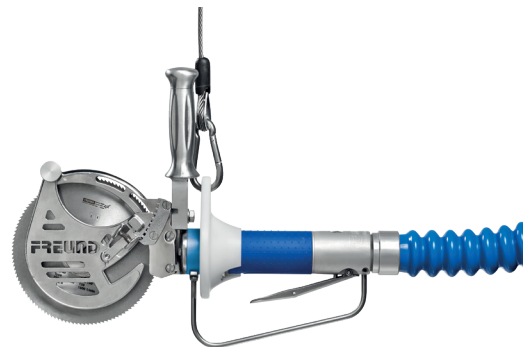
FK40-08

Circular foot saw for lateral attachment of cutting equipment

- E meat crate is used to collect bone dust
- Circular saw swivel-mounted on the tabletop for optimum cleaning
- Completely encased, powerful bevel gear drive: specifically designed for use in slaughtering & cutting up
- Stable stainless steel design **INOX / rust-free **
- Left and right-hand version available respectively for installation on a table or belt (please specify)
- Including electronic motor brake
- Up to 1200 cuts per hour

PRIMAL CUTTING

CIRCULAR BREAKING SAWS



K16-P4_evo2

One-hand circular breaking saw with pneumatical drive type for universal use

- One-hand adjustable depth control
- Powerful 800W pneumatic motor "Made in Germany"
- Stainless steel blade guard & depth control
- Even balance and force transmission protects the wrist joints
- Robust and low-wear gear unit
- Adjustable handle for better ergonomics

TECHNICAL DATA

	K16-P4_evo2	K18-01	K18-13
Weight (kg)	3,1	6,3	11,5
Diameter (mm)	160	180	180
Cutting depth (mm)	15-51	15-65	15-65
Bore (mm)	30	30	30
Cutting speed (m/s)	10	13,5	15,5
Speed	20 /s	24 /s	27 /s
Protection class		IP 24	IP 65
Drive type	pneumatic	electric, 1-phase	electric, 3-phase
Power	800 W	1050 Watt (50Hz)/VA	950 Watt (50Hz)/VA
	6 bar / 950 l/min	1,4 hp (50Hz)/VA	1,3 hp (50Hz)/VA



K18-01

Circular breaking saw for general cutting work in medium plants

- Suitable for trade
- Integrated electronic motor brake (standstill in less than 3 seconds)
- One-hand adjustable depth control
- Round handle R (D type)
- Spiral cable SK

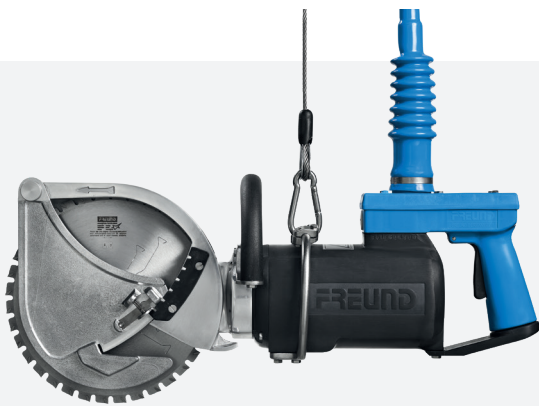


K18-13

Circular breaking saw for general cutting work in medium plants

- Small, compact and completely enclosed design
- One-hand adjustable depth control
- Saw blade stop within 3 seconds after switch-off (EU standard)
- Round handle R (D type)
- Spiral cable SKf

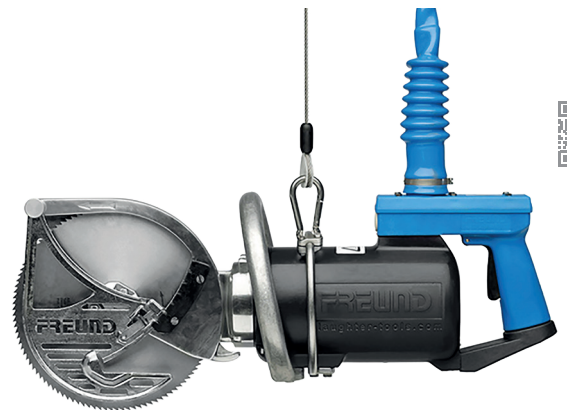
CIRCULAR BREAKING SAWS



K23-03

Circular breaking saw for general cutting work in medium plants

- One-hand adjustable depth control 15-75mm
- Saw blade stop within 3 seconds after switch-off (EU standard)
- Mechanical motor brake MMB
- Circular saw blade, coarse tooth, rust-free KGZ
- Round handle R (D type)
- Spiral cable SK



K23-06

Circular breaking saw for general cutting work in industry

- One-hand adjustable depth control
- Saw blade stop within 3 seconds after switch-off (EU standard)
- Mechanical motor brake MMB
- Circular saw blade, coarse tooth, rust-free KGZ
- Round handle R (D type)
- Spiral cable SK

TECHNICAL DATA

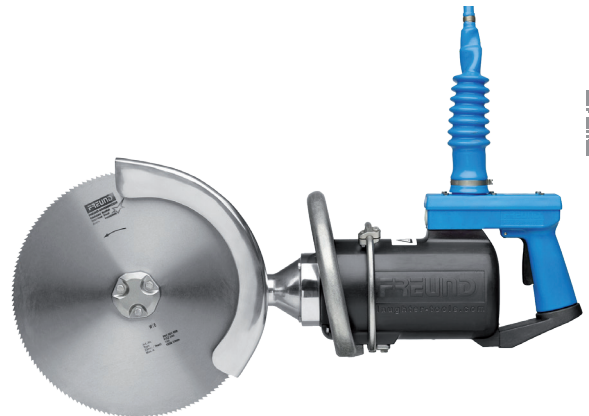
	K23-03	K23-06	K28-06	K32-06
Weight (kg)	14,5	19	19,5	20
Diameter (mm)	230	230	280	320
Cutting depth (mm)	15-75	15-75	100	120
Bore (mm)	52	52	52	52
Cutting speed (m/s)	16	16	19,5	22
Speed	22 /s	22 /s	22 /s	22 /s
Protection class	IP 65	IP 65	IP 65	IP 65
Drive type	electric, 3-phase	electric, 3-phase	electric, 3-phase	electric, 3-phase
Power	1300 Watt (50Hz)/VA 1,8 hp (50Hz)/VA	1800 Watt (50Hz)/VA 2,4 hp (50Hz)/VA	1800 Watt (50Hz)/VA 2,4 hp (50Hz)/VA	1800 Watt (50Hz)/VA 2,4 hp (50Hz)/VA



K28-06

Circular breaking saw for general cutting work in trade and medium plants

- One-hand adjustable depth control
- Saw blade stop within 3 seconds after switch-off (EU standard)
- Mechanical motor brake MMB
- Circular saw blade, coarse tooth, rust-free KGZ
- Round handle R (D type)
- Spiral cable SK



K32-06

Circular breaking saw for general cutting work in medium plants

- One-hand adjustable depth control
- Saw blade stop within 3 seconds after switch-off (EU standard)
- Mechanical motor brake MMB
- Circular saw blade, coarse tooth, rust-free KGZ
- Round handle R (D type)
- Spiral cable SK

TECHNICAL DATA

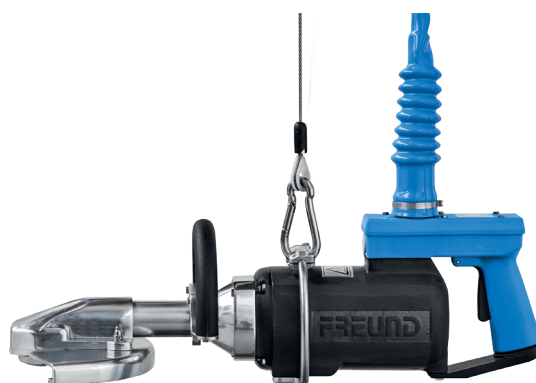
	RTK18-13	BCK23-03	SRC34-H5_evo2
Weight (kg)	12,3	13	250
Diameter (mm)	160	230	345
Cutting depth (mm)	15-65	15-75	-
Bore (mm)	30	52	-
Cutting speed (m/s)	14 m/s	16	-
Speed	27 /s	22 /s	-
Protection class	IP 65	IP 65	IP 65
Drive type	electric, 3-phase	electric, 3-phase	electric, 3-phase
Power	950 Watt (50Hz)/VA	1300 Watt (50Hz)/VA	2800 Watt (50Hz)
	1,3 hp (50Hz)/VA	1,8 hp (50Hz)/VA	3 hp (50Hz)



RTK18-13

For separating the loin ribs of the spinal column on the complete mid-section

- Two adjustable depth stops for precise cutting guide
- high degree of operator safety
- Horizontal cutting guide for correct posture
- Thin saw blade 0.8 mm for less sawdust
- optimum yield



BCK23-03

Circular breaking saw with horizontal saw blade for medium & high throughput plants

For coarse cutting, cutting out the backbone of bacon half-carasses of pigs

- Mechanical motor brake MMB
- Circular saw blade, coarse tooth, rust-free KGZ
- Spiral cable SK
- Saw blade stop within 3 seconds after switch-off (EU standard)

SPARE-RIBS-CUTTER



SRC34-H5_evo2

For optimum separation of the ribs (loin or back ribs) of split backbone

- Up to 2000 items/hour with trained personnel
- Clean, smooth and even cut
- Optimum extraction of the meat thanks to an additional extraction plate
- Consistent yield (practically no meat loss)
- Longer shelf life of the product thanks to better hygiene (hardly any sawdust)
- Safe working

- Laterally integrated conveyor belt for the ribs
- Low space requirement
- Transport rollers for a quick change of location
- High degree of stability for the guides thanks to being locked via the tension lever
- Quick payback time due to the attractive price/performance ratio
- Circular knife blade can be re-sharpened
- Quick and easy to clean

PRIMAL CUTTING

SPRING BALANCERS



SPRING BALANCERS WITH CABLE EXTENSIONS UP TO 3,0 M

TYPE		CABLE EXTENSION		BALANCING RANGE		WEIGHT, GROSS		PART NO.
		m	ft	kg	lbs	kg	lbs	
F20-3SK	S	3	10	15-20	33-44	19	42	920-470-100
F25-3		3	10	20-25	44-56	20	44	920-471-000
F35-3	S	3	10	25-35	56-78	21	46	920-472-000
F45-3	S	3	10	35-45	78-100	24	53	920-473-000
F50-3	S	3	10	40-50	89-111	24	53	920-474-000
F60-3	S	3	10	50-60	111-133	25	56	920-475-000
F70-3	S	3	10	60-70	133-156	27	60	920-476-000
F80-3		3	10	70-80	156-178	28	62	920-477-000
F90-3	S	3	10	80-90	178-200	29	64	920-478-000
F100-3	S	3	10	80-100	178-222	29	64	920-479-000
F115-3		3	10	100-115	222-253	40	88	920-480-000
F130-3		3	10	115-130	253-260	40	88	920-481-000
F140-3		3	10	130-140	260-308	43	95	920-482-000
F150-3		3	10	140-150	308-330	46	100	920-483-000
F160-3		3	10	150-160	330-352	49	108	920-484-000
F180-3		3	10	160-180	352-396	50	110	920-485-000

TECHNICAL SUPPORT

OPTIMUM PLANNING

Excellent service is an important factor for customer loyalty – all of us at FREUND embody this belief. Whether it's maintenance, complaints or repairs – efficient service processes not only ensure satisfied customers, but also set us apart from the competition thanks to the comprehensive and meticulous technical service we offer.

PROFESSIONAL SERVICE

The basis for optimum service is the precise planning and handling of all our service offers. Based on a history of your existing machines, our team members are highly knowledgeable when it comes to your FREUND machines. In compliance with statutory requirements, you will receive a test certificate after any repair work.



ARRANGING AN APPOINTMENT

When a service request is received, our service team members immediately see which equipment is available and when. To ensure operational safety, we provide you with equivalent rental equipment for the duration of the repair work. Service lives are lengthened and downtimes are minimised, which has a positive impact on the life of FREUND machines and ensures a faultless production process. Our collection service will also save you time and effort and guarantees secure packaging for the transport process.

SERVICING

Special tools and decades of industry experience allow for flawless repair work in accordance with technical requirements. Only original parts and auxiliary materials are used - all of which have been approved via our in-house quality control. Thanks to the updates that are directly accounted for in the repair process, your product always complies with the latest technological standards.

Lower your operating costs via regular maintenance and repairs.

DIVERSE SERVICE PORTFOLIO

Multiple tasks can be entered for a service order. Such tasks are assigned to our service team. Our qualified employees provide professional advice and support, which is carried out in a skilful manner, on time and carefully according to our company philosophy.

You can reach our technical service via the following channels.:

Phone: +49 (5251) 1659-46

E-Mail: service@freund.eu

FREUND ASSISTANCE

WE ARE DIGITAL



A couple of clicks, no waiting times, using a PC, smartphone or tablet at any time of day or night: our customer portal provides you with information and functions relating to our machines - at any time of day!

We're going digital for you to unite you as a customer with us on one platform – communication and data exchange as you have never experienced it before with FREUND.

Operating manual and login can be found on our website :

www.freund.eu/assistance

ADVANTAGES FOR OUR CUSTOMERS

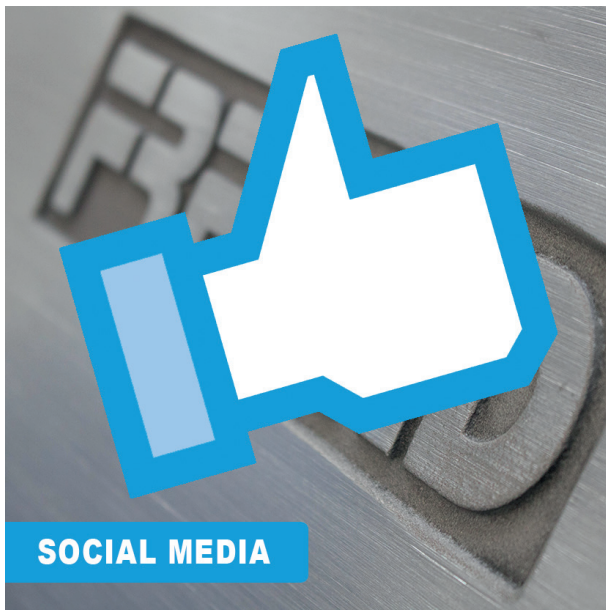
- Find your FREUND machines and FREUND devices
- You can navigate your way around the respective machine
- Find, view and print a spare parts list
- Operating manuals for our machines/devices
- Installation manuals for our machines/devices
- SRC technical information
- Send order requests directly to FREUND Sales by email, done directly from the customer portal
- Further users (multi-user login) can be created per customer on request

The advantages to the customer are at the forefront of everything we do. Our customer portal is of course available to you free of charge. After all, customer relations is a top priority for FREUND. Please give us a call on

+49 (5251) 1659-0 .

SOCIAL MEDIA

FREUND - SOCIAL MEDIA



Over 150 million people in Europe alone are active on social and digital media every day.

Platforms such as Facebook and LinkedIn are becoming ever more important in the fast-moving communications mix.

Each individual “user” predominantly makes use of such platforms on a mobile device.

The social media measures of FREUND Maschinenfabrik GmbH & Co. KG are tailored to the development for different channels.

The goal of all these measures from FREUND is to offer the respective “user” inspiration for products, developments and general information.

At FREUND, we use our social media not only to further develop our own offers, but also as an efficient way to increase awareness of our in-house product developments and customer information.

To ensure you are always fully up-to-date, visit and follow us on our social media channels as well.



<https://www.facebook.com/FREUND-Germany-374611402632603/>



<https://www.linkedin.com/company/freund-germany>

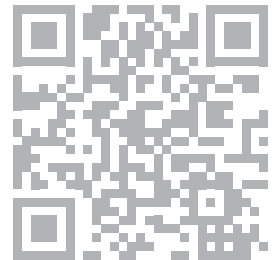


https://www.instagram.com/freund_germany/

FREUND Maschinenfabrik GmbH & Co. KG

Schulze-Delitzsch-Str. 38
33100 Paderborn, GERMANY
mail@freund.eu

Fon: +49 (5251) 1659 -0
Fax: +49 (5251) 1659 -77
www.freund-germany.com



DE



ES



FR



RU